


Giovanni Berio
ARCHITETTO
Largo le Croci, 8 - Ruvo di P.

Roberto Ruta
ARCHITETTO
Via Saffi, 20 - Ruvo di P.

COMUNE DI

RUVO DI PUGLIA

PIANO DI LOTTIZZAZIONE DEL COMPARTO C.2
ELABORATO GRAFICO INQUADRAMENTO URBANISTICO E CATASTALE
stralcio aerofotogrammetrico, stralcio PRG e catastrale
SCALA 1:5000 1:2000 1:1000 TAVOLA 2



COMMITTENTE
impresa PELLICANI spa

LORUSSO Francesco

PROGETTISTA
arch. Roberto Ruta

COMMITTENTE
Sig. Paolo Columella
Sig. Vincenzo Columella

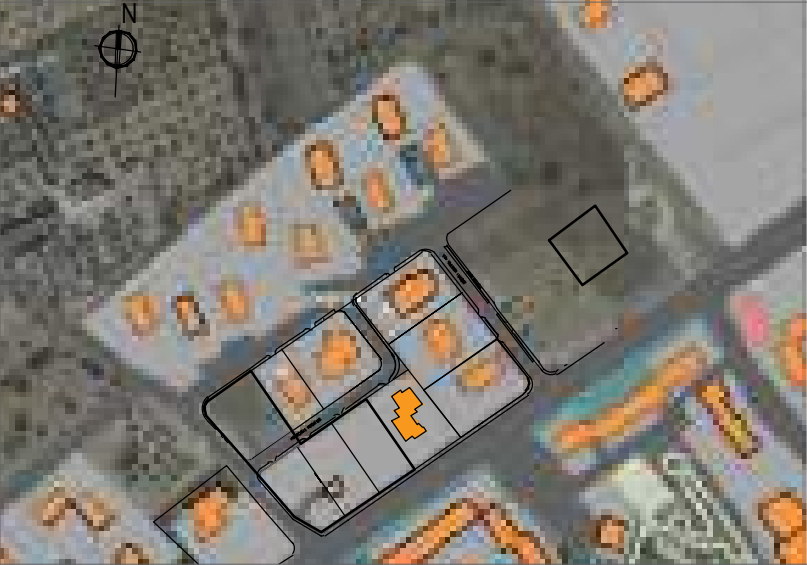
germani DE PALO

PROGETTISTA
arch. Giovanni Berio

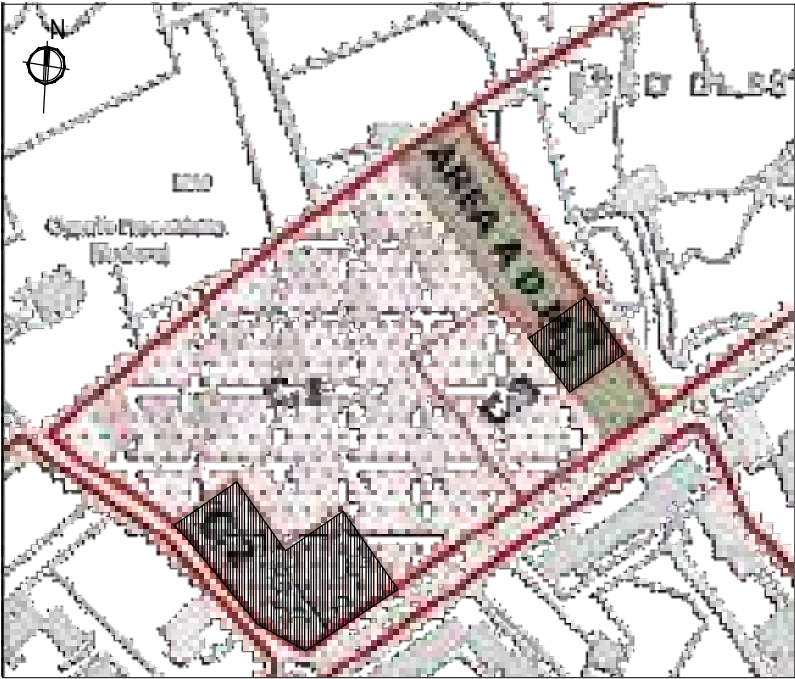
DATA APRILE 2020

COMPARTO "C2"

Ortofoto (Scala 1:2000)

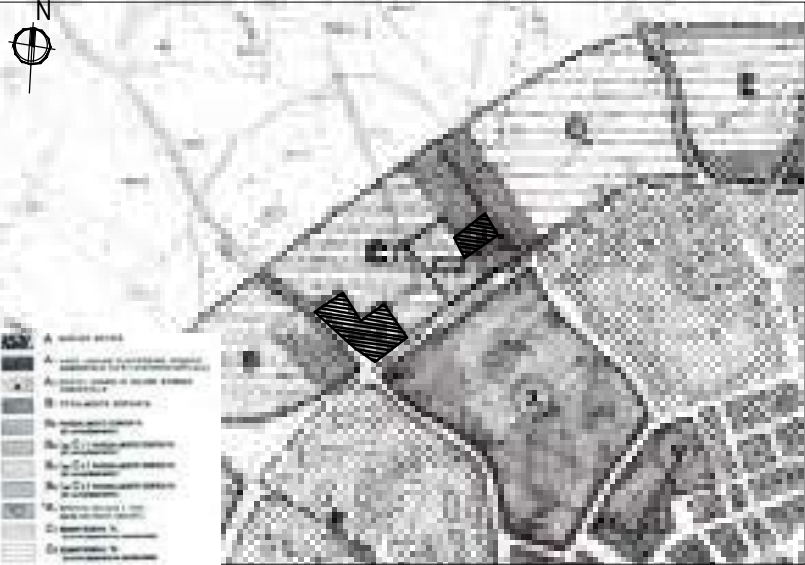




Aereofotogrammetria (Scala 1:2000)



 COMPARTO C.2

Stralcio PRG (Scala 1:5000)



 LOTTI EDIFICABILI COMPARTO C.2
 AREA A D.M. 1444/68 COMPARTO C.2

Stralcio Catastrale (Scala 1:1000)

fg. 16 p.lle 1206-1283-1245- 1261- 1248- 1252- 1246- 1262- 1249- 1253- 1247- 1229- 1263- 1250- 1254- 1286- 1223- 1217

